

User S2S Installation instruction



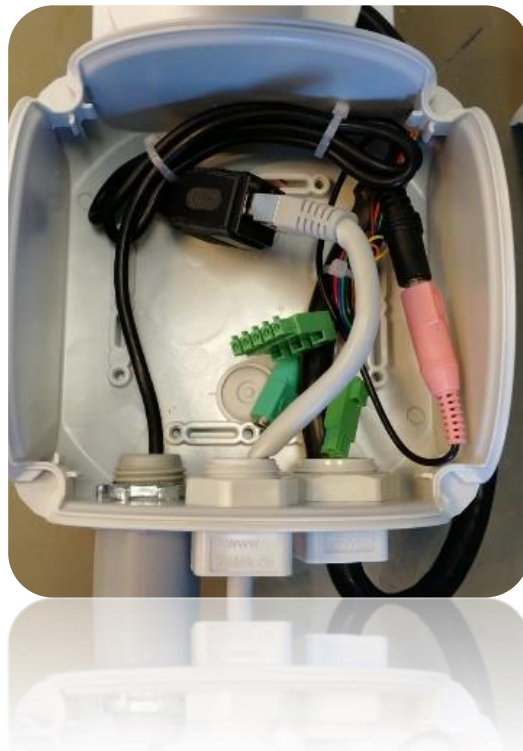
1. Open the junction box by turning the 4 bolt on the cornes.
2. Disassemble the middle split-gland from the box



Disassembled the split glands: open it, using a screwdriver, lift gently the teeth from both sides, so the gland splits to 2 parts, and the grommets can be removed



3. Tight the gland to the box, using the white nut (make sure the sealing ring is on the gland)
4. Connect the Ethernet cable to the camera's black female connector in the box

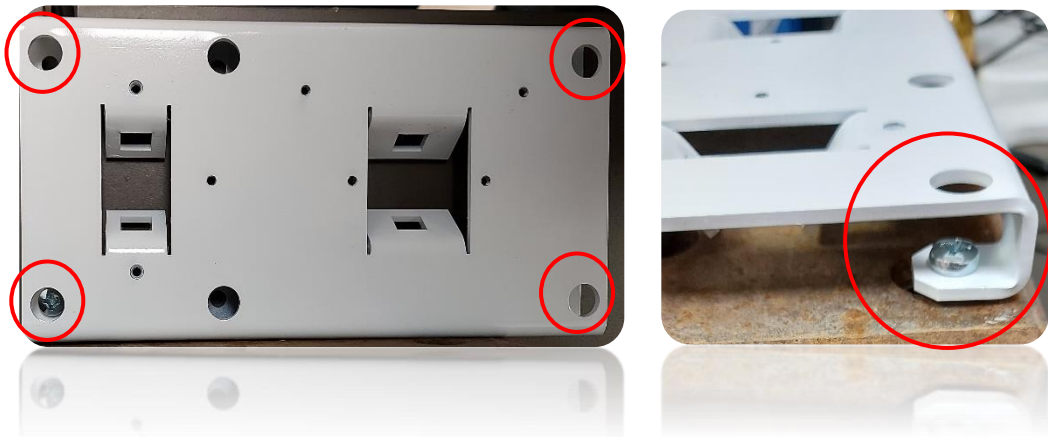


5. Close the box and the test the system befor installation on place

Installing the system on a wall or a pole

The system base use as a mount for placing the system on a wall or a pole.

A. For installation on wall us the 4 holes in the corner to place it by screws.



B. For installation on a pole use the steel bands:

1. Open the bands and insert it to the mount holes.
2. Circle the pole with the bands and tighten until the mount touch the pole and the system is stable.

